

THE SPLIT

INSPIRATION:
THE GLOBAL CULTURE IS EVOLVING AT AN EXTREMELY FAST PACE, BY OVERCOMING EVERY HARSHIP THROUGH ANY MEANS POSSIBLE. THE PANDAMIC EXPOSED OUR VULNERABILITY AND PUSHED OUR TECHNOLOGICAL TALENT TO THE LIMIT. WE'VE NORMALIZED WORK FROM HOME PROCESSESS AND ARE PUSHING ADVANCEMENTS TO STUDY SELF-DRIVING POD OFFICES AROUND THE GLOBE.

IN ADDITION TO THIS FAST PACE, THE GLOBALIZATION OF NETWORKS AND INFORMATION ALLOW FOR CONVENIENT CO-WORKING SPACES AND START-UPS TO CHALLENGE BIG CORPORATIONS. THIS INTERSECTION OF PARAMETRIC WITH INDIVIDUALISM IS SHAPING THE FUTURE.

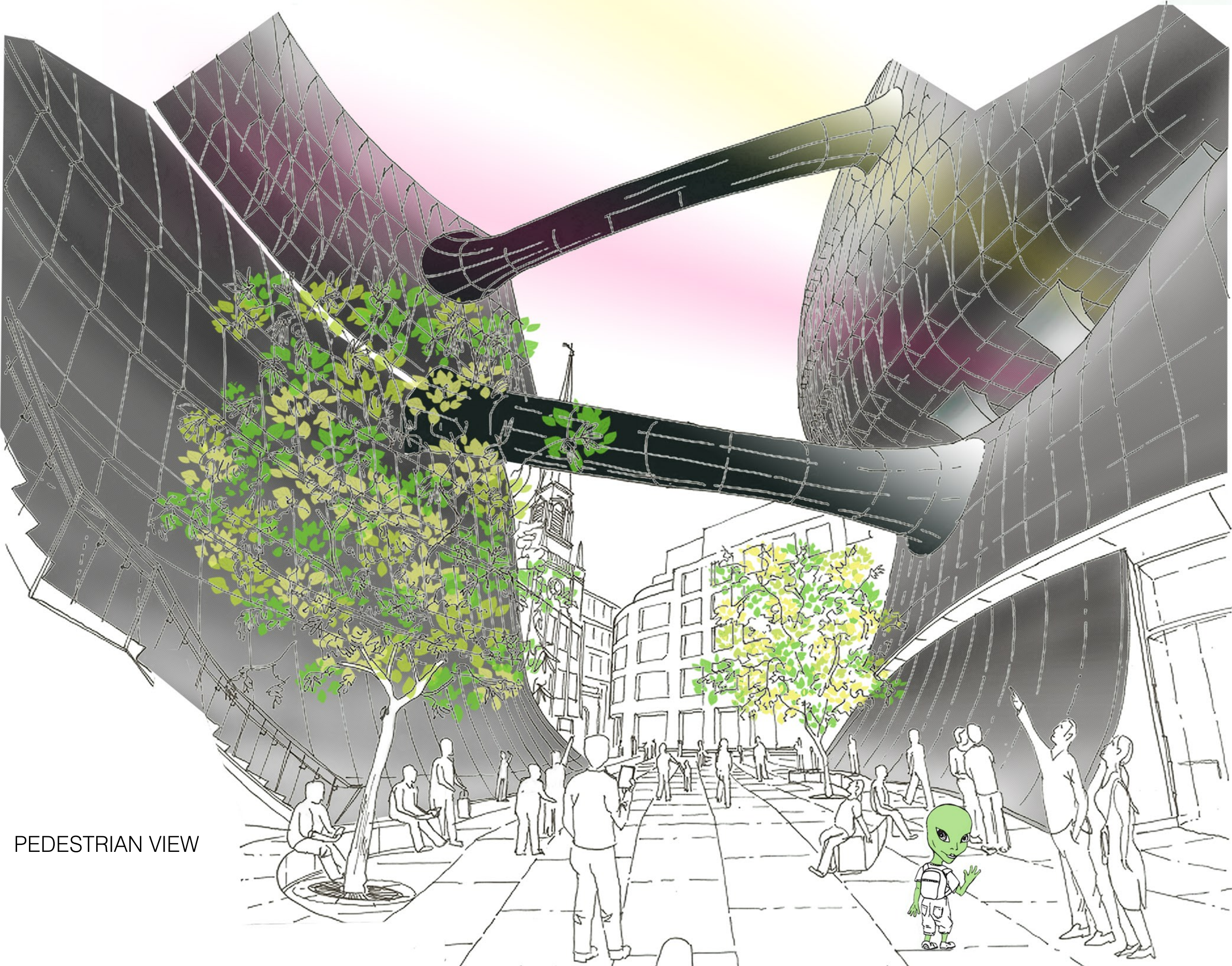
APPLICATION:
WITH THE TRADITIONALLY COLD CLIMATE OF LONDON OUR PROJECT ATTEMPTS TO MAXIMIZE SUN EXPOSURE AND HARNESS NATURAL ENERGY SOURCES.

IN THAT EFFORT, WE **SPLIT** THE MASS TO ALLOW SUN ACCESS AND NATURAL VENTILATION DEEPER INTO THE PLAN WHERE IT IS MOST NEEDED. WE ADDED RETAIL ON THE GROUND FLOOR TO MAXIMIZE FOOT TRAFFIC AND SALES, WHILE ALSO BRINGING MORE ATTENTION TO THE ABOVE COWORKING SPACES. IN THE PAST, A PLOT THIS SIZE WOULD BE FULLY RENTED FOR CORPORATE OFFICES, BUT TODAY IT IS SHARED WITH STARTUPS. THE SPLIT MIRROS OUR BEHAVIORAL CHANGE RESULTS FROM THE PANDEMIC AND CONTINUED LOCKDOWN. THE GLOBAL COMMUNITY TRYING TO APPEAR STRONG, WHILE BEING TORN APART FROM THE INSIDE.

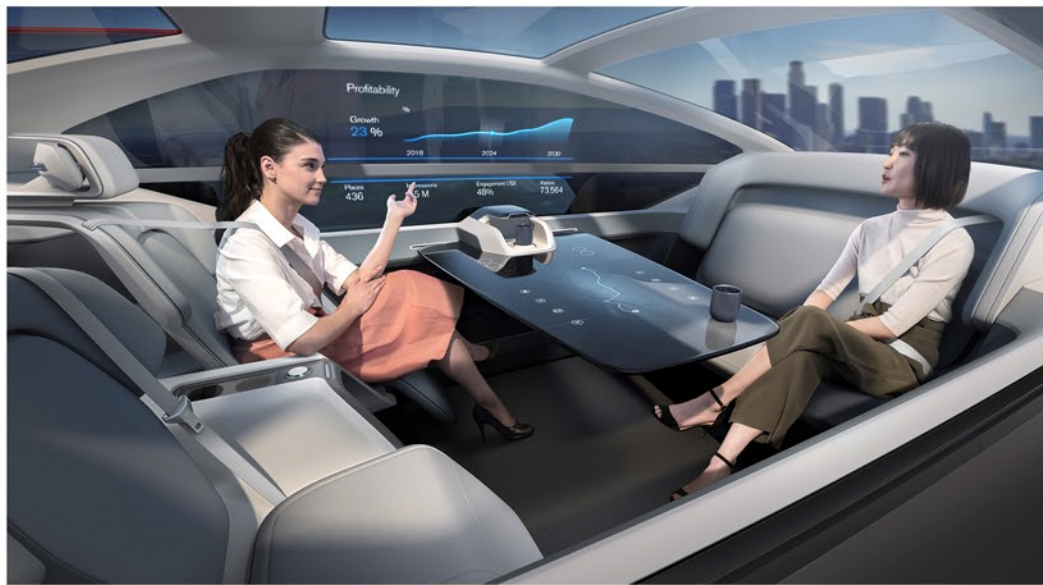
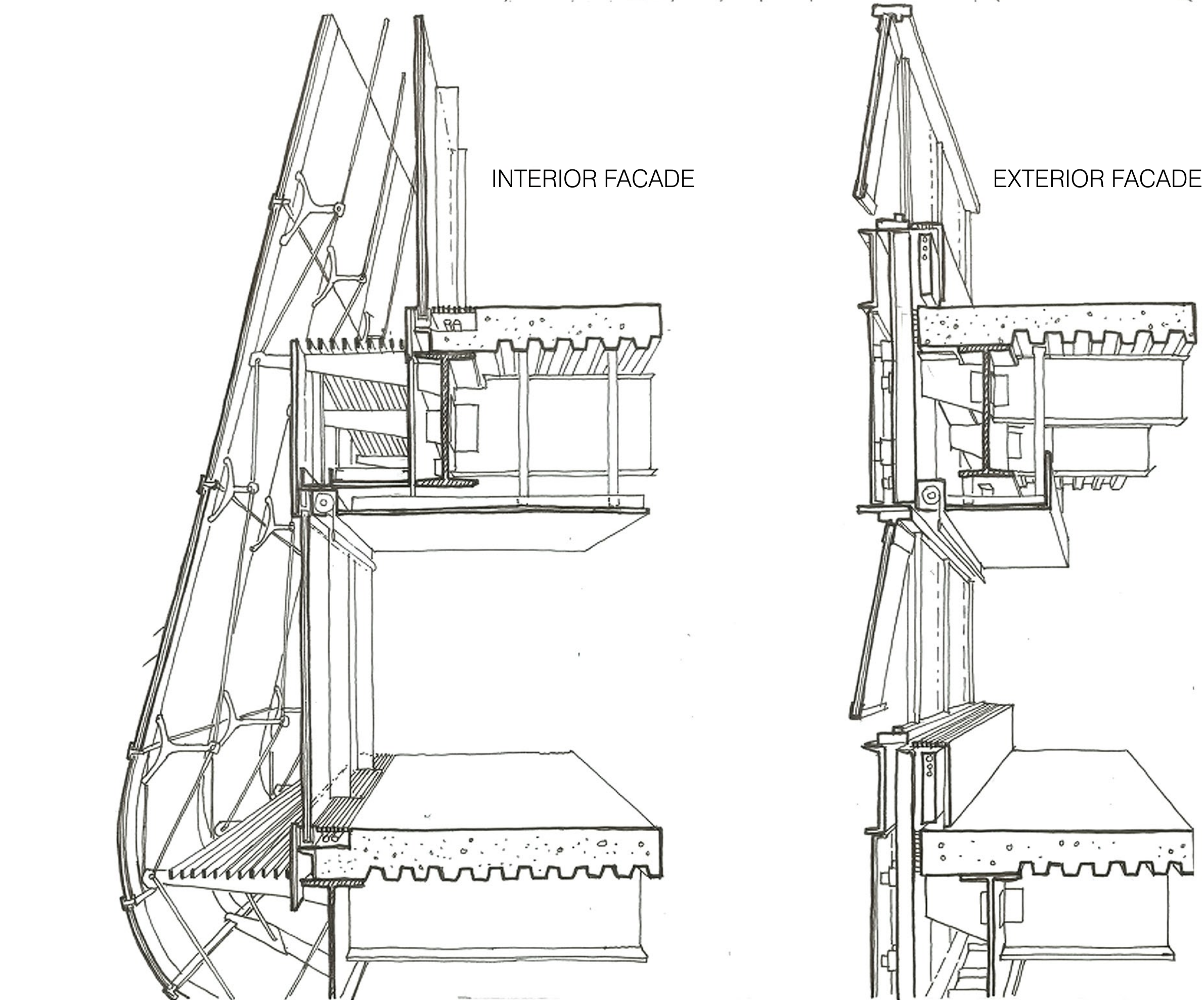
OUR PROJECT MAKES THE ASSUMPTION THAT SELF DRIVING POD-OFFICES ARE THE FUTURE AND WILL BECOME PUBLIC VERY SOON. TO THAT END, ELECTRIC POD LIFTS ARE INCORPORATED IN THE PLAN WHILE THE BRIDGES LINKING **THE SPLIT** MASS ARE SHARED BETWEEN THE POD AND PEDESTRIAN.

WHEN WE THOUGHT ABOUT DAYTIME IN LONDON, WE ENVISIONED FORMAL CLOTHES, SMART WATCHES, LEATHER SHOES, AND UMBRELLA'S. WITH THAT IN MIND, THE OUTER SKIN IS A CURTAIN WALL SYSTEM REPRESENTING THE STRICT ASPECT OF THE CITY OF LONDON IN THE MORNING WHILE BLENDING WITH ITS CONTEMPORARY SURROUNDING

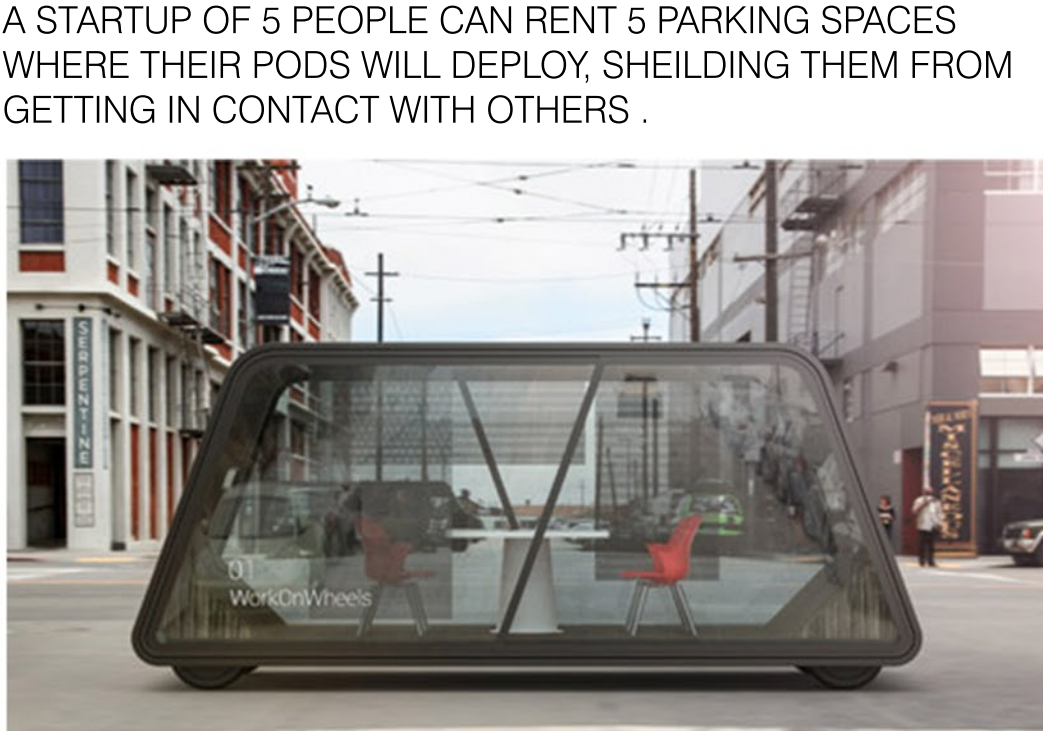
THE SPLIT IS SHOWN THOUGH THE INTERIOR SKIN, WHICH REPRESENTS THE FUNKIER ASPECTS OF LONDON USUALLY SEEN AFTER-HOURS IN BRICK LANE, LEAKE STREET TUNNEL, AND DOWNTOWN LONDON WITH HAPPY HOURS, LIVE MUSIC.



PEDESTRIAN VIEW

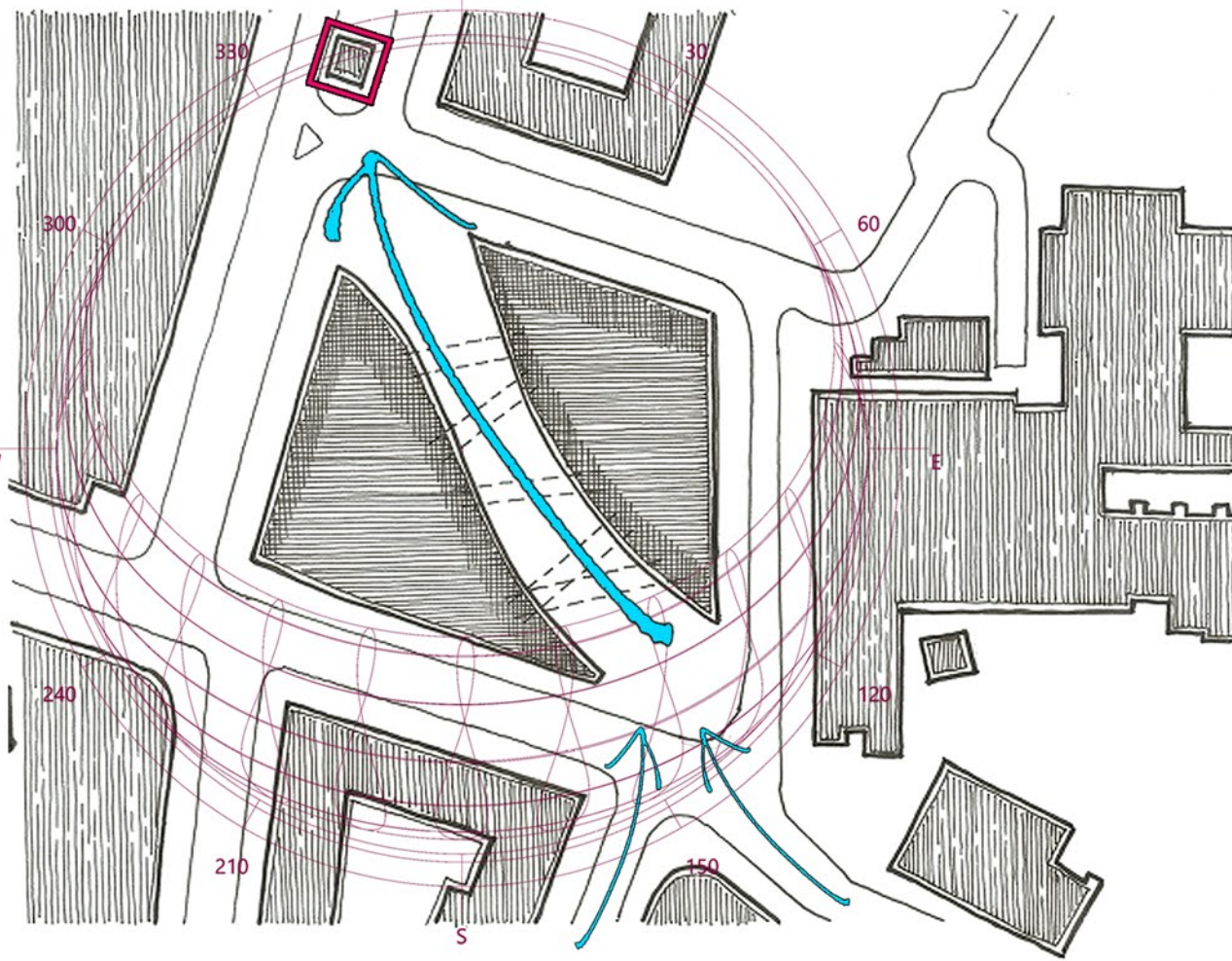


SELF DRIVING POD/OFFICE THAT BRANCHES TO THE LONDON TUBE, REACHING THE RENTED SPACE AND DEPLOYS INTO A BIGGER OFFICE.



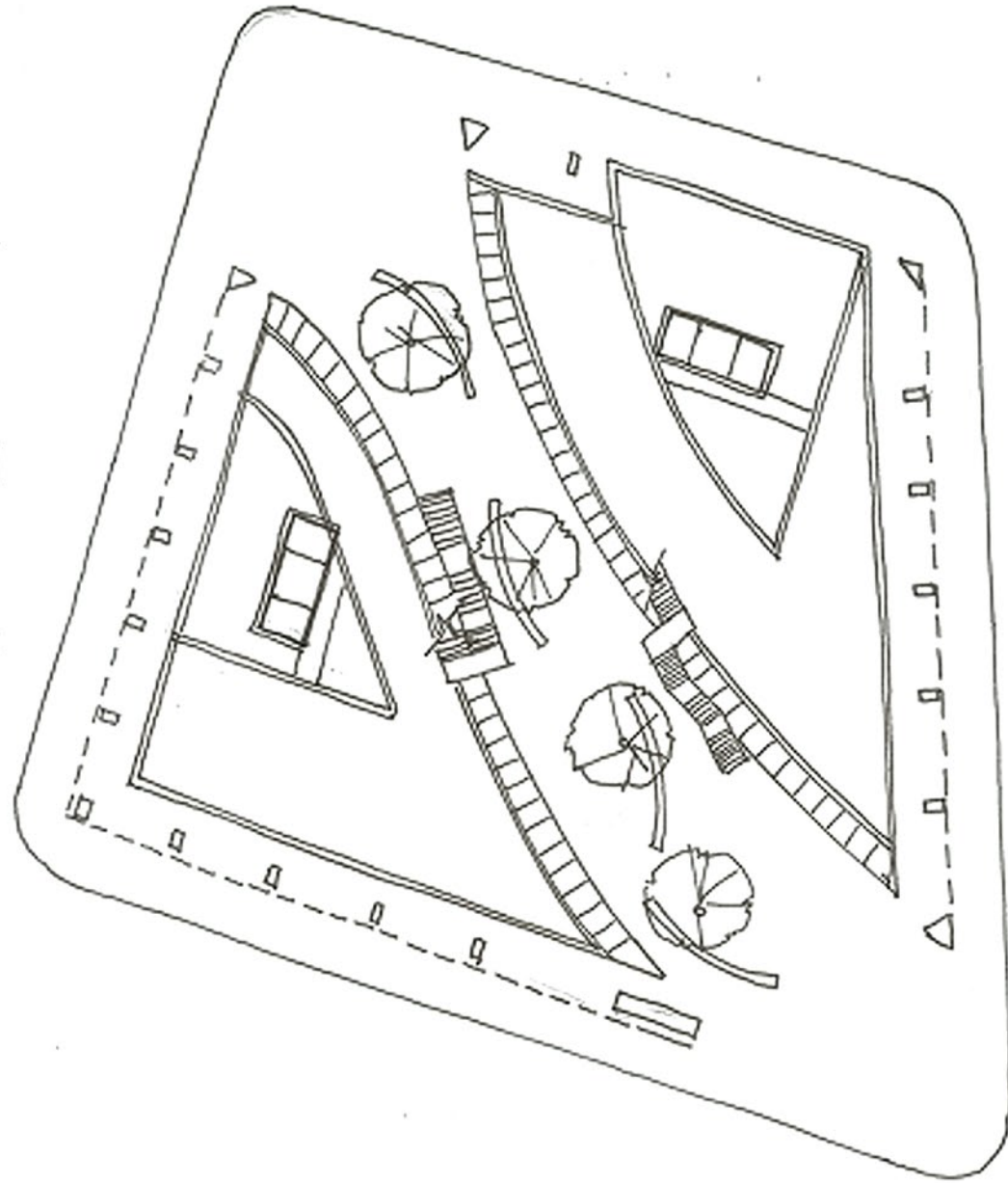
A STARTUP OF 5 PEOPLE CAN RENT 5 PARKING SPACES WHERE THEIR PODS WILL DEPLOY, SHEILDING THEM FROM GETTING IN CONTACT WITH OTHERS .

TOP VIEW SHOWING THE SUNPATH DIAGRAM. THE TUNNEL WILL ALLOW SOLAR ACCESS TO THE DEEP PLAN, NATURAL VENTILATION TO MOST SPACES AND MOSTLY HIGHLIGHT THE TOWETR OF **ST. ALBAN**

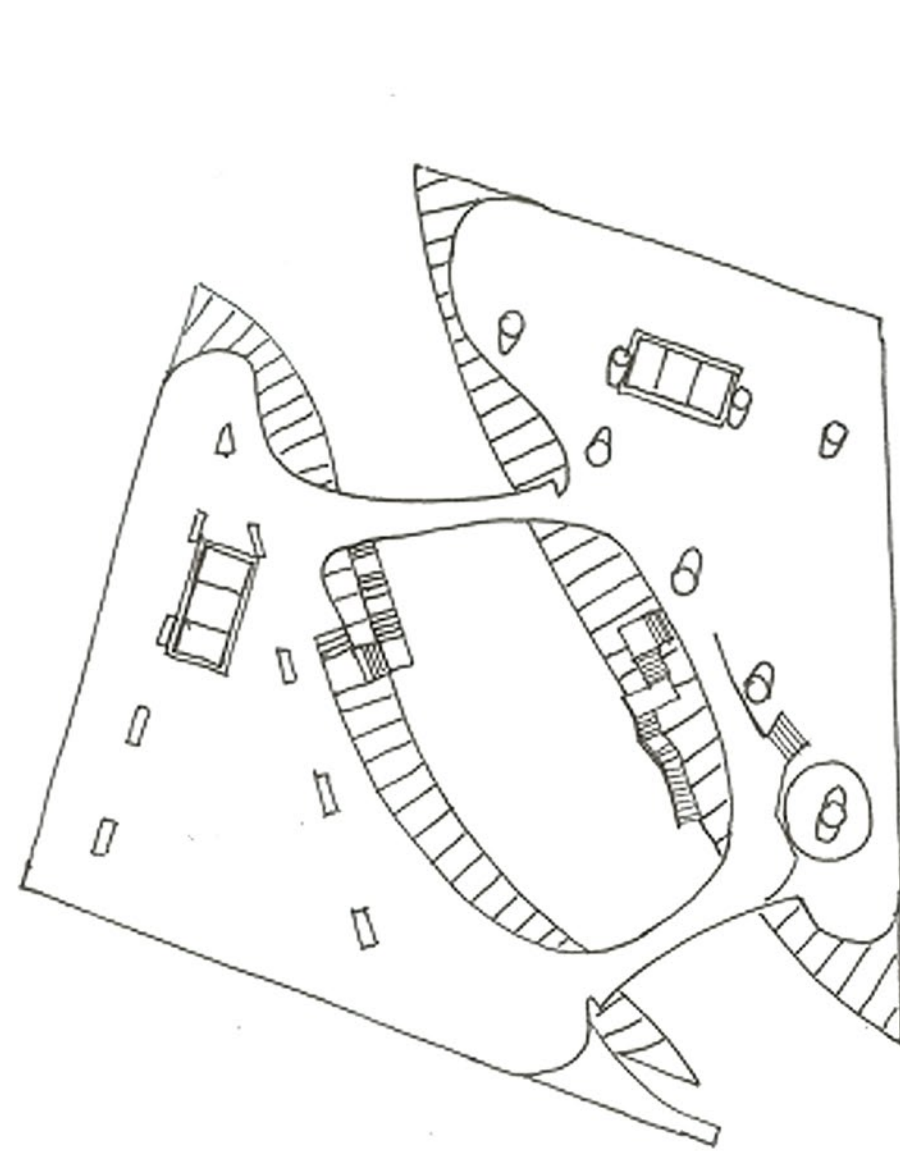


*SOURCE: WW.DEZEEN.COM
*SOURCE: <https://www.volvocars.com/intl/cars/concepts>

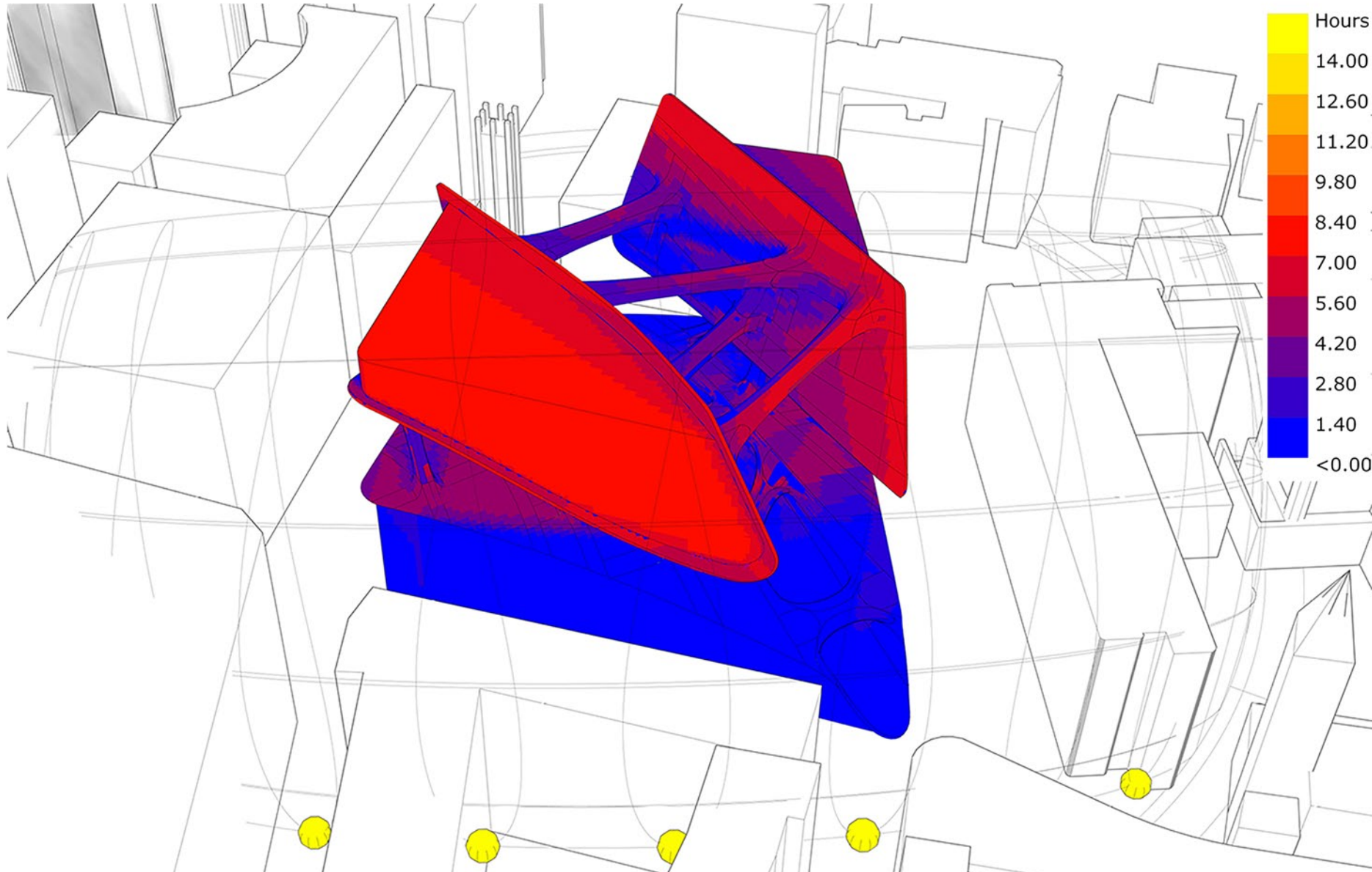
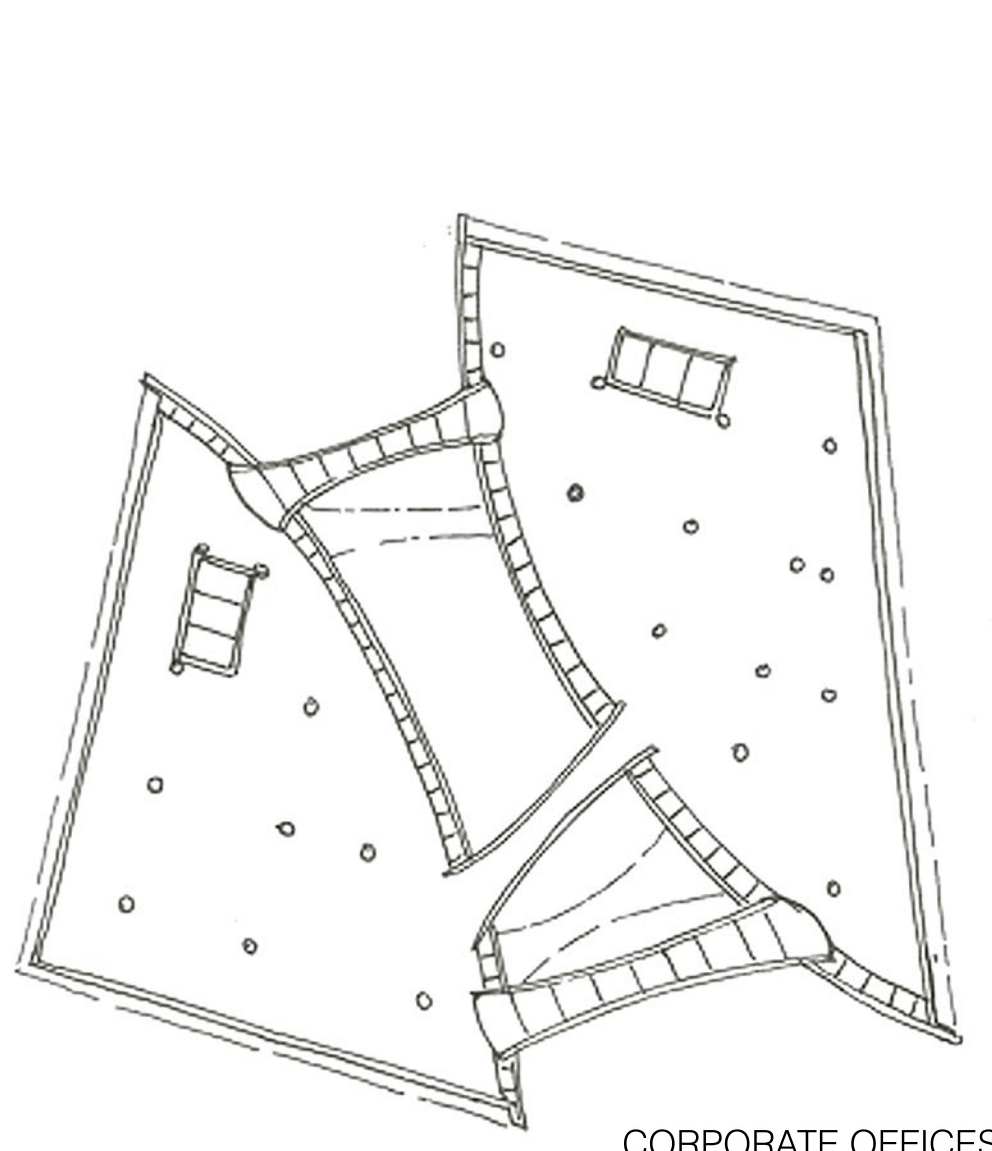
GROUND FLOOR LAYOUT SHOWING THE CAR LIFT ACCESS, RETAIL AREA, PEDESTRIAN TUNNEL CONNECTING THE TWO SQUARES, OPEN FOR ARTISTS



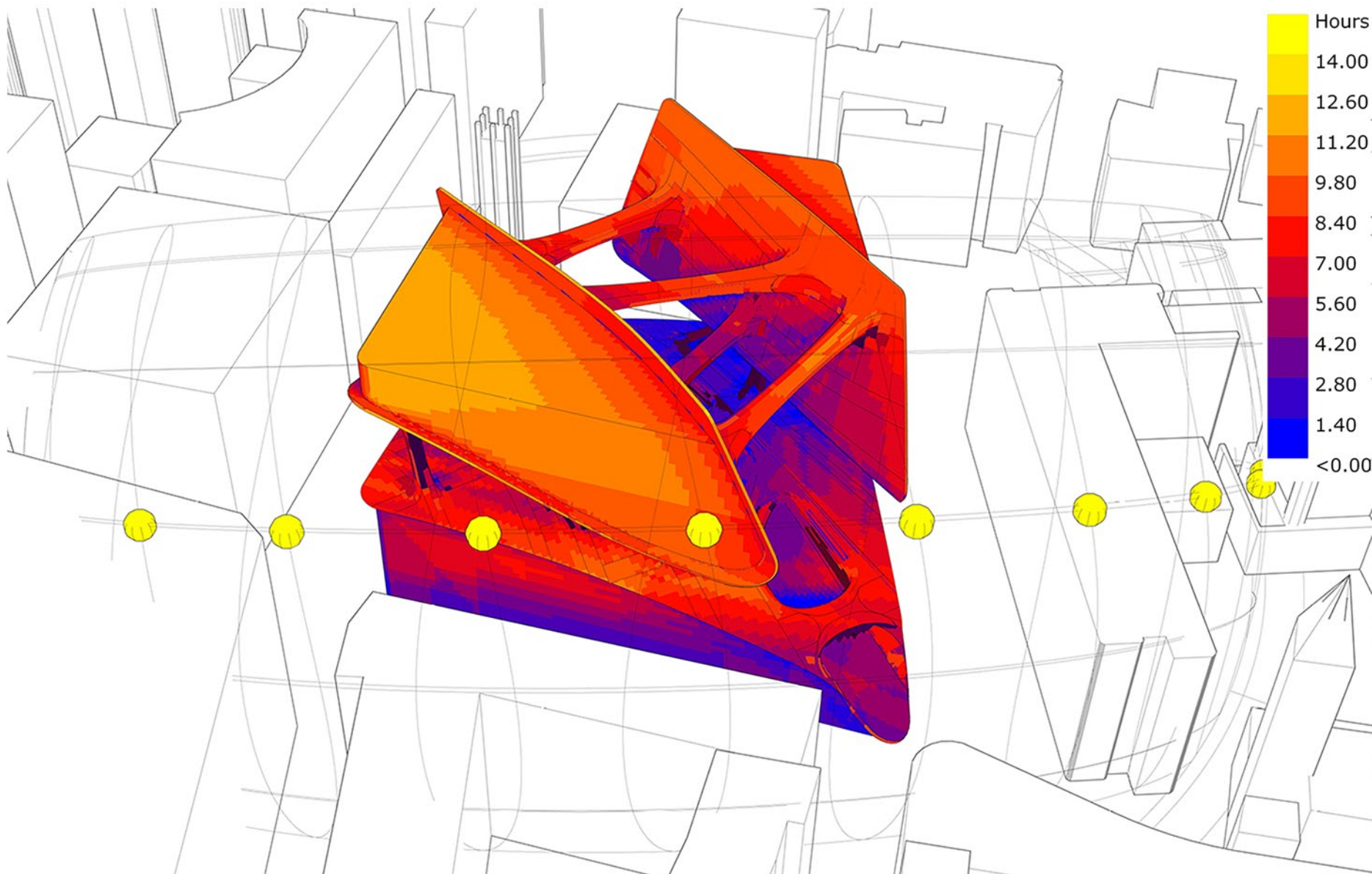
ELEVATED OUTDOOR PUBLIC FLOOR ACCESSIBLE BY ESCALATORS, LIFTS, AND STAIRS. OPEN EXHIBITIONS, FOOD MARKETS, EVENTS AND GATHERINGS.



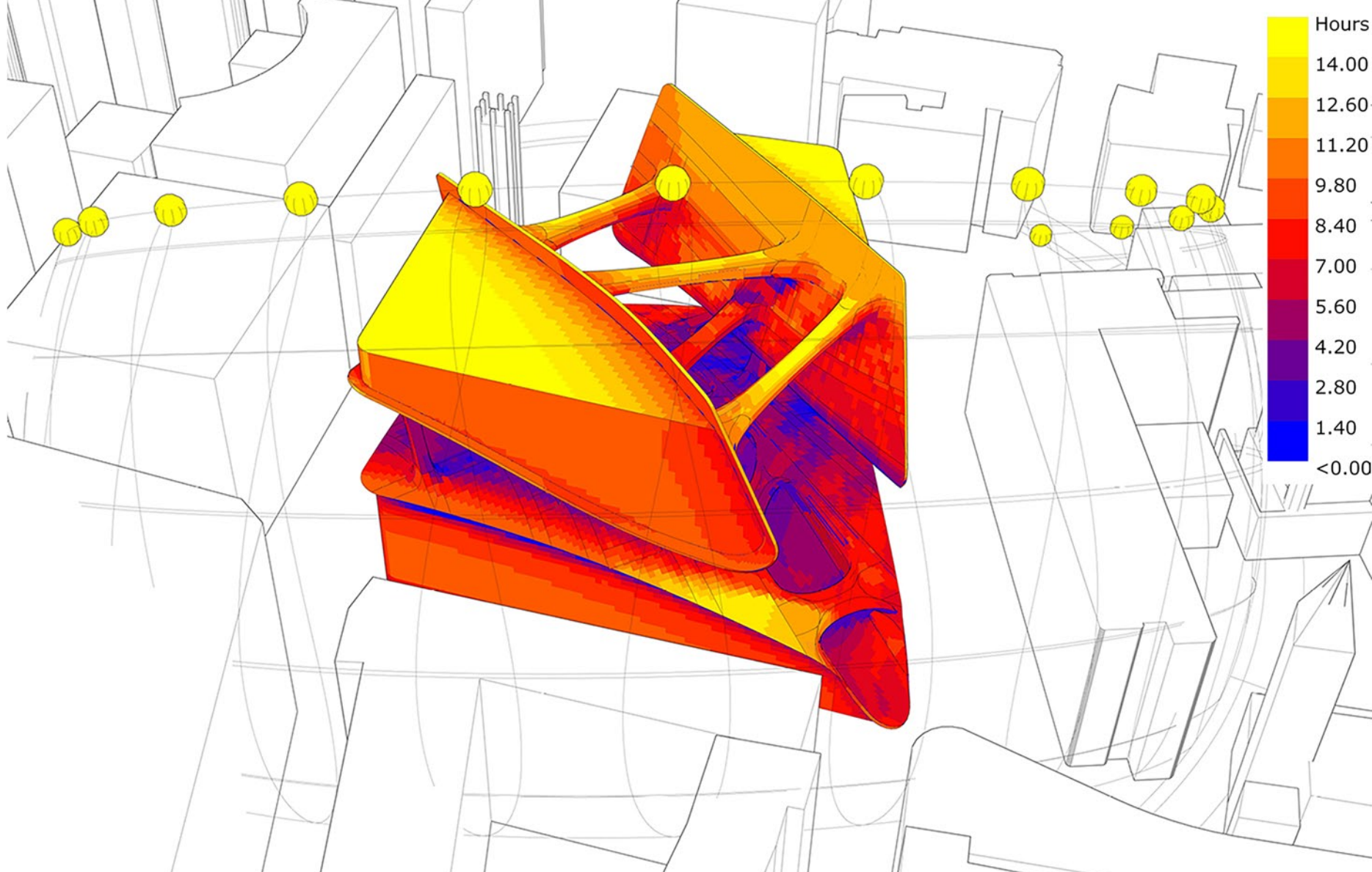
UPPER VOLUMES WITH MULTIFUNCTION AREAS. CORPORATE SPACE IS LIMITED, ALLOWING STARTUPS TO RENT AND ORGANIZE THEIR SPACE BASED ON ONE MODULE: THE SELF DRIVING POD-OFFICE



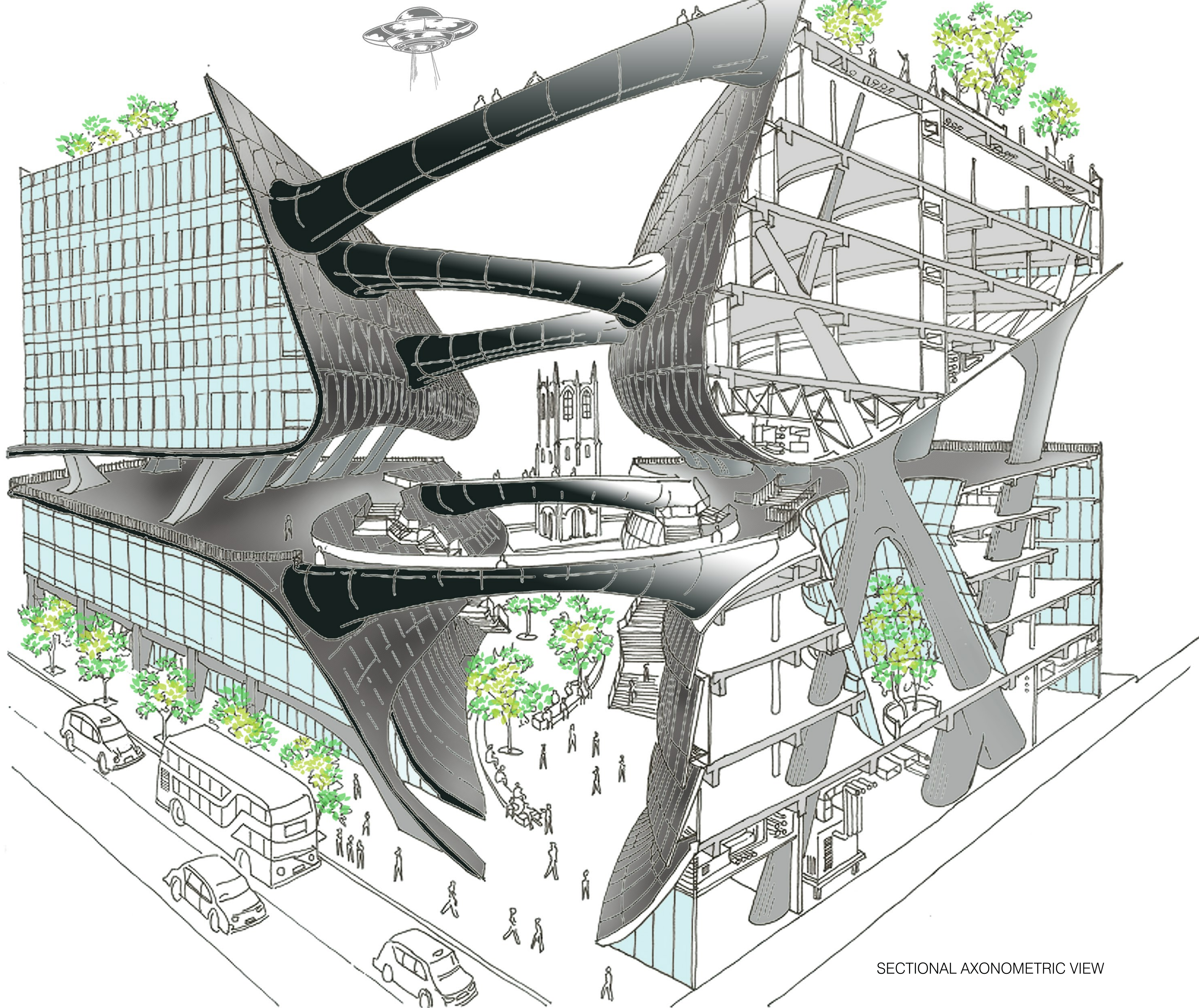
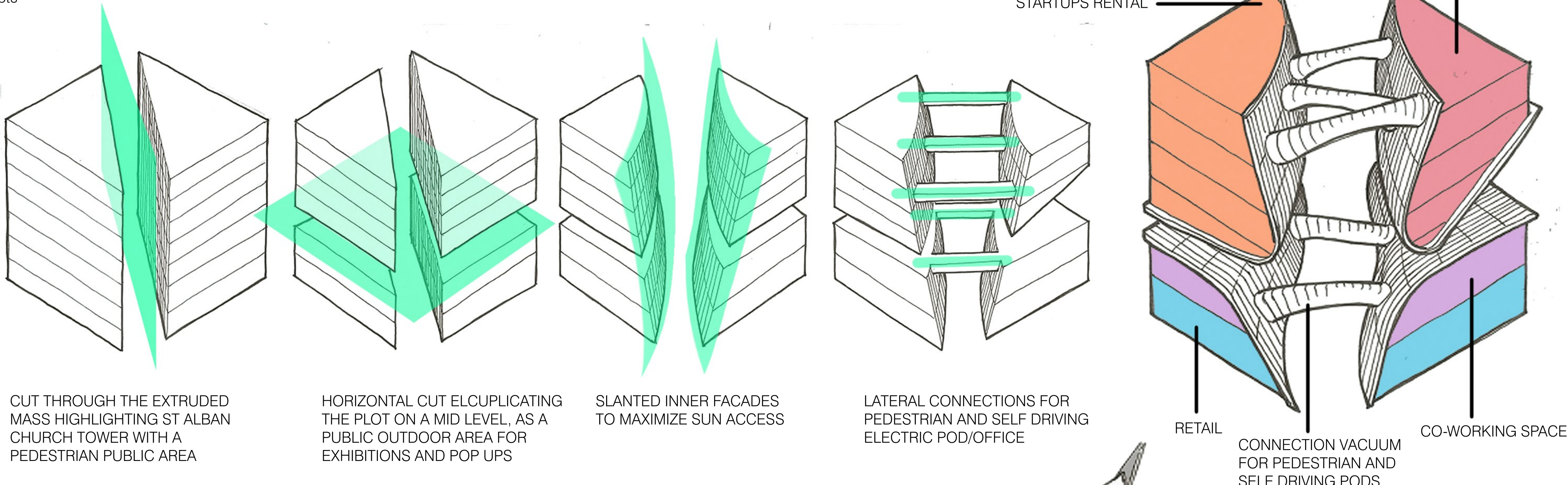
SUNLIGHT HOURS ANALYSIS: WINTER SOLSTICE:
THE INTERIOR SPACES ARE GETTING A FAIR SHARE OF SUNLIGHT, RANGING FROM 0-7 HOURS. THE SURROUNDINGS ARE SHADING MOST OF THE LOWER AREA, BUT THE ELEVATED TERRACE GETS AROUND 4 HOURS OF DIRECT SUN.



SUNLIGHT HOURS ANALYSIS: SPRING EQUINOX
MOST OF THE INTERIOR FACADE GETS FROM 5 TO 8 HOURS OF DIRECT SUN. THE SOUTHERN AND MID PART OF THE TERRACE IS ALSO EXPOSED FROM 4 TO 9 HOURS



SUNLIGHT HOURS ANALYSIS: SUMMER SOLSTICE
MOST OF THE FACADES ARE TOTALLY EXPOSED. THE OVER EXPOSURE CAN BE BLOCKED BY INTERIOR BLINDS (FACADES WITH 10 HOURS OF SUNLIGHT).
THE PEDESTRIAN ACCESS GETS FROM 5 TO 8 HOURS OF DIRECT SUN.
IN CASE OF OVER-HEATING, THE OPEN SPACE ALLOWS THE CIRCULATION OF FRESH AIR



SECTIONAL AXONOMETRIC VIEW