



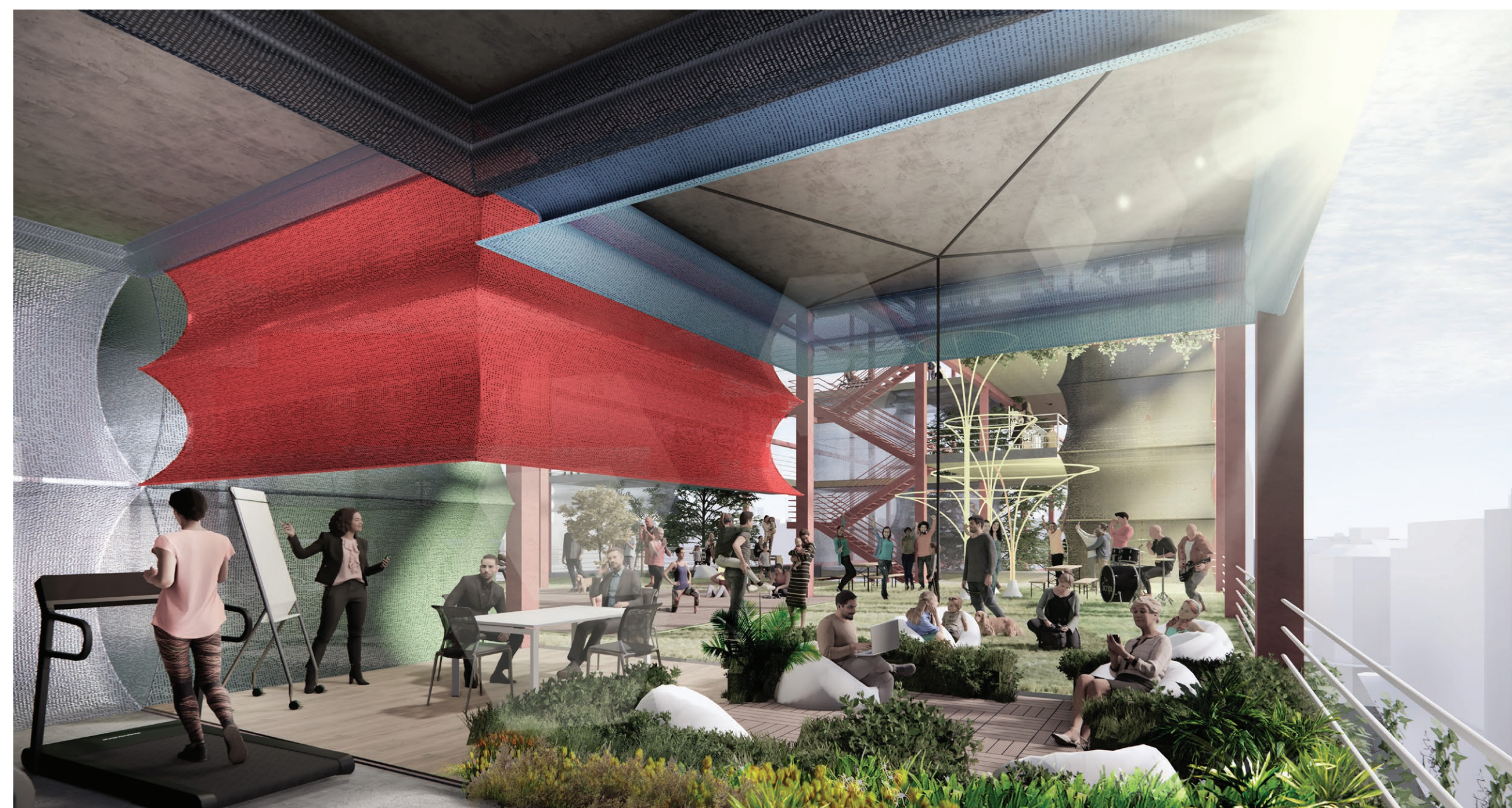
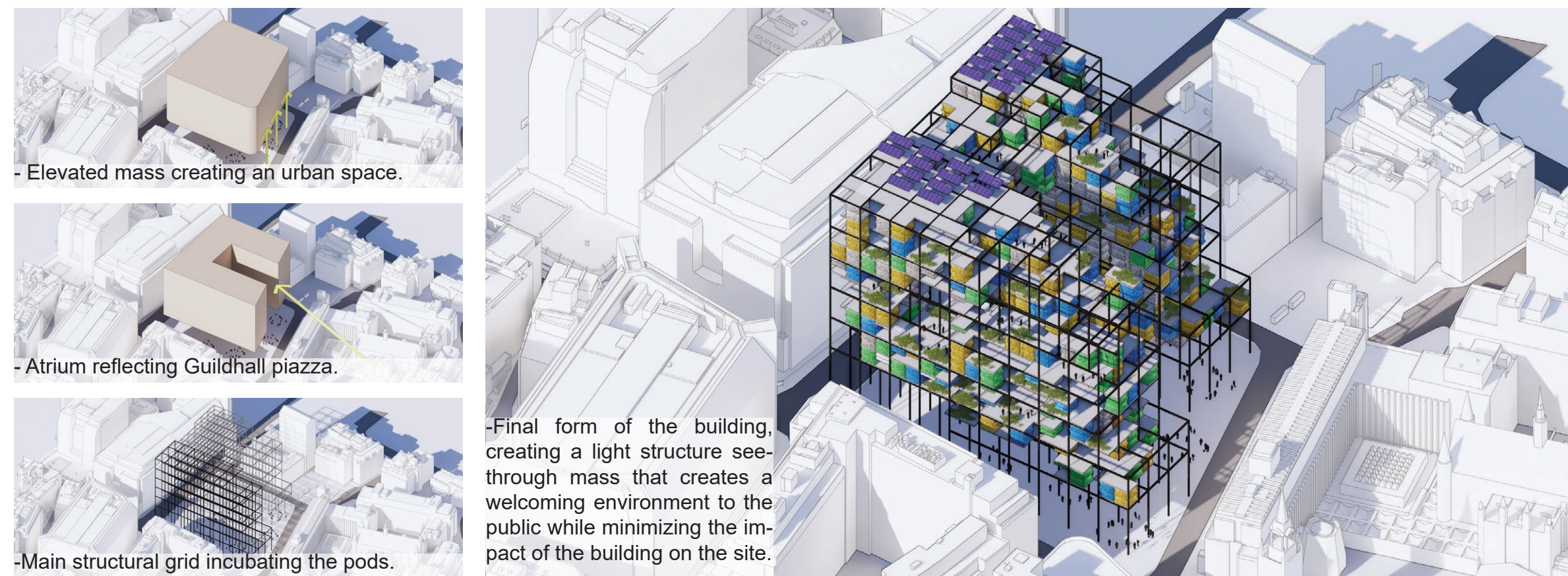
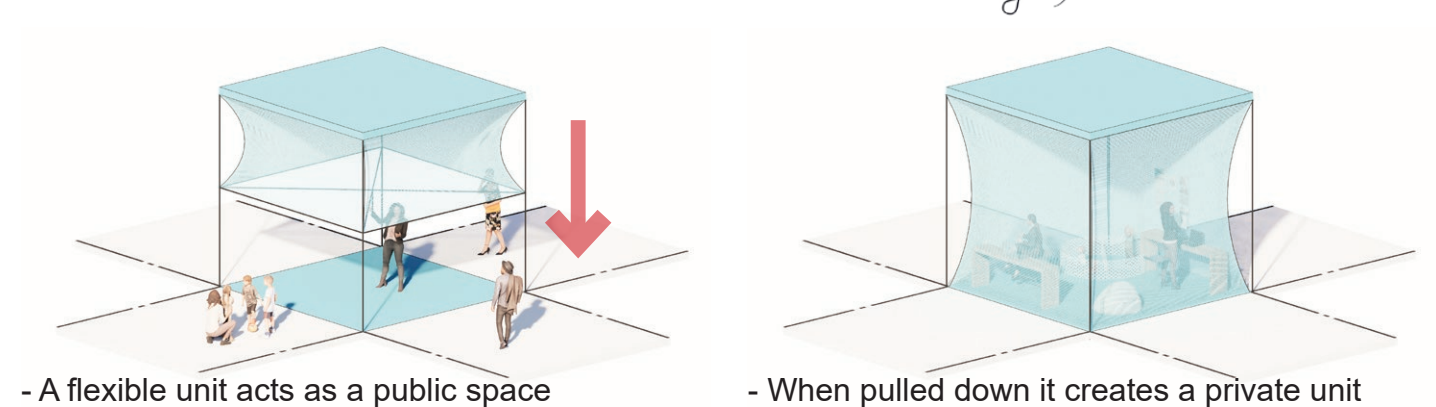
LANTERNS OF HOPE

Concept
Designed to add playfulness to the serious district inhabited by office buildings, the building aims to revive the seemingly dead area in the aging heart of London. The Metropolitan village attracts visitors from every age, gender, and race. It takes the challenging mission of changing the way we live, work, and interact with others. The building aims to provide access to key quality-of-life amenities at the heart of communal life.

Function
The busy bee-hive atmosphere of the building promotes sharing, humane qualities, and compassion among people. This is a place you can bump into your neighbor, your college friends, or your dentist. This is a place where serious political debates can take place, as well as casual chats about the weather today. It is a place to organize fund raisers to the newest charity in town, book club gatherings and lectures about art, culture, and education. All while committing to the newly introduced parameters of social distancing and hygiene.

Role
Through its fun lantern-like cubicles the building reclaims the social power to decide the shape of the city's future, the cubicles are easily customizable to the varying social, economic, and environmental needs of the community. The high adaptability of the building performance and it's easily assemble/dissembled light structure reinforces the ability of the building to endure any future catastrophe. The adjustable skin and openness of the building mimics that of a living organism in its ability to survive, adapt, withstand major catastrophes, and bounce back, better than ever.

Inspiration
The skin of the building is inspired by the story of St. Martin, known for his saintly acts of compassion to the poor. In some countries during St. Martin's day, children walk in processions carrying lanterns. In addition, Lanterns in the collective conscious of humanity symbolizes hope, celebrations, and new beginnings.



A Sustainable development

We are creating sustainable development by using (PV roof panels), introducing green roofs, waste water treatment, rainwater reuse and using recyclable materials.

ETFE Tensile sheets:
It offers a flexible alternative to glass, its light weight, durability and flexibility makes it easily modified in future purposes. It acts also as a good temperature regulator, and can be recycled.

Its non-adhesive surface makes it a self-cleaning material making its disinfection and cleaning an easy and sufficient process.



Hybrid Co-Working Space

As the result of current pandemic circumstances, people have had difficulties to adapt working from home due to kids playing around, lack of social interaction & struggle with depression and anxiety due to isolation.

An open co-working space Diversity including kids zone for working parents in the workplace is an excellent way to add new perspectives, and increase innovation within the company.

Well-being

The recent pandemic has had significant psychological & social effects on the population. Focusing on our well-being, mental health and fitness respecting social distancing has been shown to lead to a number of better life outcomes, such as better health status, more satisfactory social relationships, higher productivity and increased educational achievements.

Art & Culture

Every artist plays a different and necessary part in contributing to the overall health, development, well-being of our society. Creative thinkers & makers provide their communities with joy, interaction, & inspiration, but they also give thoughtful critique to our political, economic and social systems – pushing communities to engage thoughtfully and make steps toward social progress.

Marketplaces

Marketplaces are regarded as quintessential public spaces, providing not only access to fresh produce but also functioning as important social and economic infrastructures. It creates job opportunities, help to reduce poverty crisis and contribute in stock market stability.

An Urban space

Urban spaces are the centre for relations and development in cities which have the potential to increase citizens' social interactions level and by the capacity that it has in society dynamism, it is a solution in accessing sustainability in social arena.

Shelters

Homeless shelter: are a type of homeless service agency which provide temporary residence for individuals & families. They are welcomed to come at night and sleep in units and also providing them an employment opportunity in the Market place.

Animal shelter: play a vital role in our communities as they continuously work to reunite pets with their owners, shelter those in need and find new homes for animals and find new homes for animals.

